

UPCOMING EVENTS FOR LUDLOW COOP:

January 16th Martin Luther King Jr. Day - CBOT Closed - Ludlow Coop will be open!

January 19th Farmer Market Meeting - Paxton Bowl Banquet Room 6:00 p.m. with Dinner served—Please RSVP to Ludlow Coop Facility

January 24th Farmer Market Meeting - Buckley Legion 12:00 p.m. with Lunch served—Please RSVP to Ludlow Coop Facility

January 25 & 26-Ludlow Coop booth at Midwest Ag Expo at Gordyville - Penfield

February 20th President's Day - CBOT & Ludlow Coop will be closed!

LUDLOW COOP ELEVATOR COMPANY

MARKETING CONTRACTS - 2006 CROP YEAR

We will once again be offering market informational meetings to be held January 19th and 24th. Harry Woods, FCStone Risk Manager, will be our guest speaker. Along with market information we will be announcing the 2006 marketing contracts. There will be another accumulator contract offered again this year. If you are unfamiliar with this contract it runs for several weeks and bushels are priced one specified day a week as long as the December futures trade between a certain range that is determined prior to the contract start date. The basis (by delivery location) is established at the beginning of the contract along with the flat price of the contract. If the futures trade above the contract high price the bushels for that particular week are doubled. If the

futures trade below the low of the contract (knock out price) the contract ends. At this point whatever bushels have been priced in weeks prior are booked and the contract is final. We will be mailing out updates on the contract every five weeks to let you know how many bushels have been added to your contracts and to let you know the Futures close for those weeks. You will be able to sign up for this contract and others offered at the market meetings; otherwise please contact one of our facilities if you are inter-

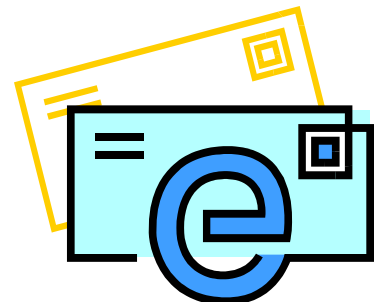
ested or want more information on the contracts. When signing up for the contracts we would prefer you give us the bushels by accounts (split out between the tenant and landlord). This information is important for us to know ahead of time due to harvest activity and settling grain at delivery time. Please let us know your email addresses too if you have one we send out marketing contract information as contracts become available. Happy Marketing!



LUDLOW COOP EMAILS BIDS DAILY....

If you would like to receive our daily bids and market information along with crop reports please give us your email address and we will add you to our "farmer email group". We also send out information pertaining to any upcoming

marketing contracts we are going to offer and other company information. Please send your email address to tjohnson@ludlowcoop.com or call the Ludlow office at 1-800-500-2676.



FARM IDENTIFICATIONS - PLEASE BE SURE WE HAVE YOURS SET UP PRIOR TO HARVEST OF 2006

LUDLOW COOP FACILITIES:

Ludlow Facility
100 West Thomas
P.O. Box 155
Ludlow, IL 60949
217-396-4111

Clarence Facility
100 South Main Rd.
Clarence, IL 60960
217-379-2900

Perdueville Facility
452 N 1480 E Co Rd
P.O. Box 27
Paxton, IL 60957
217-379-3714

Buckley Facility
102 West Central
P.O. Box 178
Buckley, IL 60918
217-394-2331

Loda Facility
Chesnut Street
P.O. Box 176
Loda, IL 60948
217-386-2412

DelRey Facility
1181 N 550 E Co Rd
Thawville, IL 60968-9523
815-268-7217

Paxton Facility
North Rte. 45
P.O. Box 322
Paxton, IL 60957
217-379-4366

If you have new farm ground for this next harvest year or if your farm splits will be changing please let us know prior to harvest! We would be glad to add your FSA farm number to your farm splits in order to keep your record information, the FSA's and ours easier to comprehend for all of us. The FSA has also requested that your accounts with us be set up the same as theirs. That would include the name of

the account and the split of the grain. If you want changes made please con-



tact us to make your changes prior to harvest also. If you have any questions please feel free to contact any of our Ludlow

Coop Facilities.

We also will make farm ID signs-preferably prior to harvest also, identifying the farm and grain split you are currently hauling from, for you to use when hauling grain into our locations during harvest delivery. This drastically speeds up traffic and provides valuable information to our help at the scales who may be unfamiliar with our patrons. Your help would be greatly appreciated!

VISIT OUR WEBSITE FOR COMPANY INFORMATION.....

www.ludlowcoop.com

Our daily bids are posted on our website along with past newsletters, LDP rates

(updated weekly), employee email addresses, current crop year storage and drying rates and other information that may be informative to you. Watch for

changes to be taking place on our website in the future.

WANT A CERTAIN PRICE FOR YOUR GRAIN?? PUT AN OFFER IN WITH LUDLOW COOP!

We do take grain price offers for your grain! All you need to do is call one of our offices with the bushels you want to sell and the price that you are

wanting for your grain and we will watch the markets for you. We have limited offers to a 30 day time period. You can offer in your

old crop or even new crop. If you want more information please contact one of our offices!

